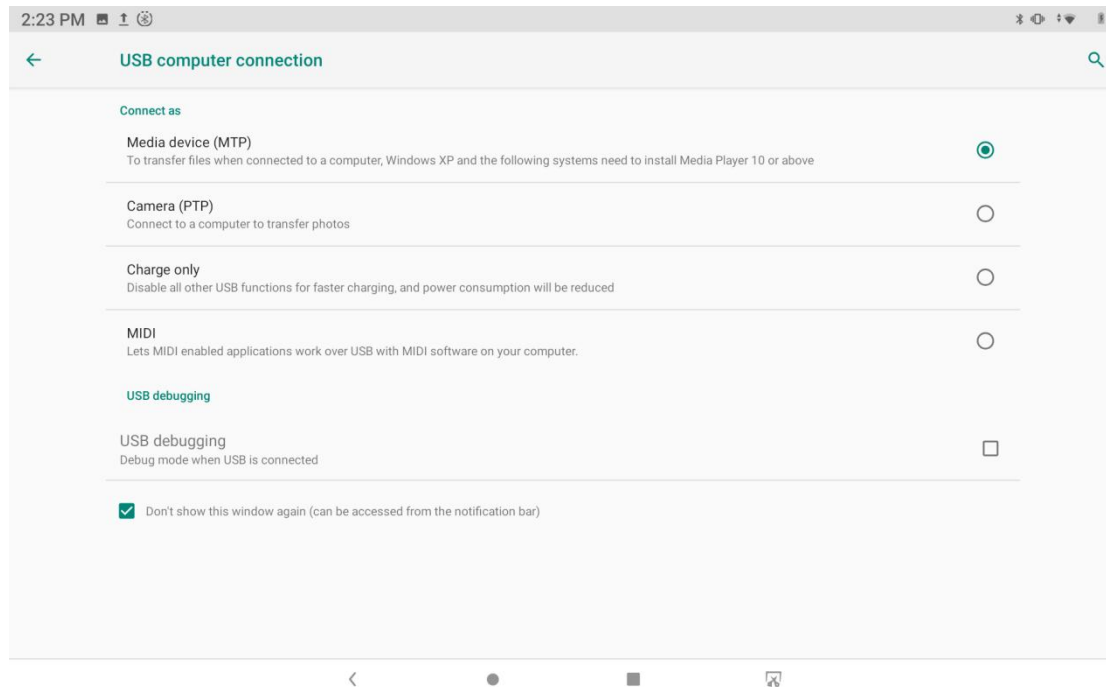


配置在线编程功能操作方法：

用 USB 数据线连接电脑与设备端，并在设备上设置 USB 链接方式为以下选项

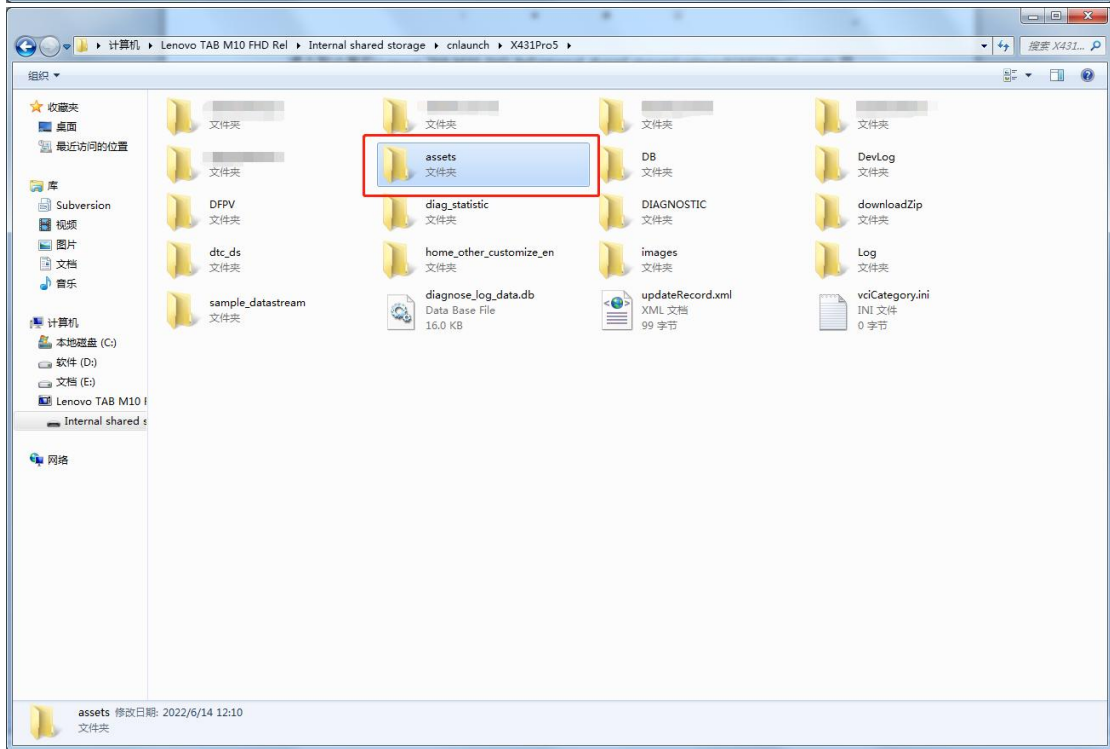
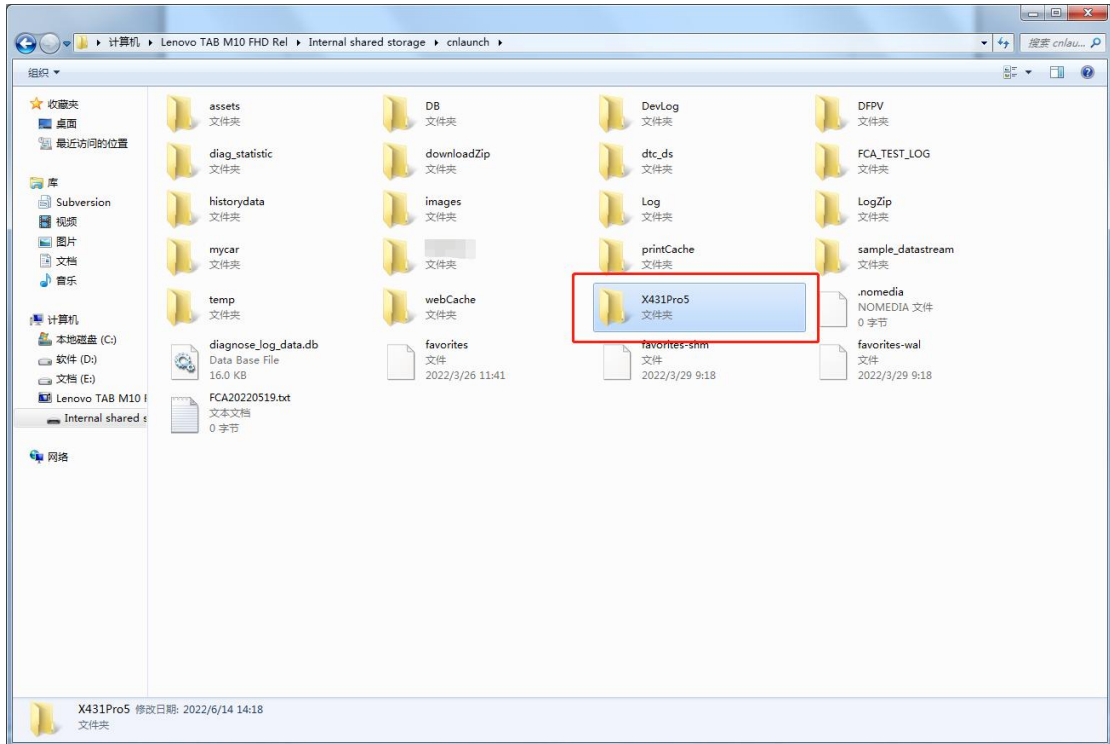
Operation method of configuring online programming function:

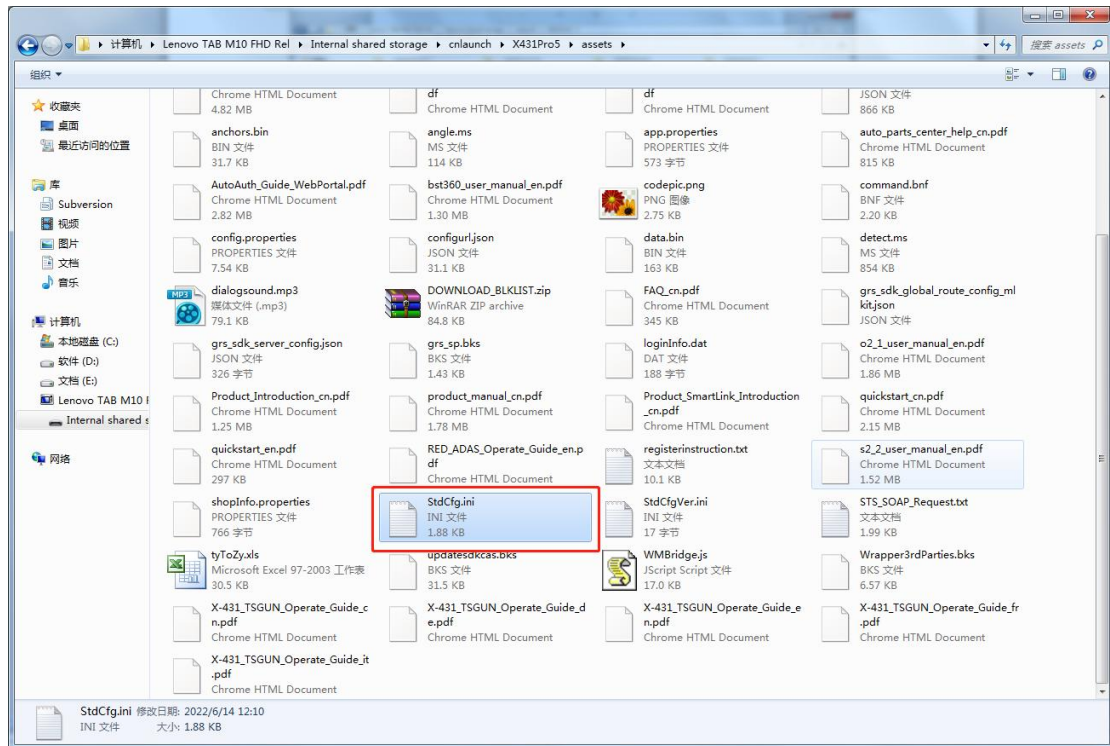
Connect the computer and the device with a USB data cable, and set the USB link mode on the device to the following options



进入到计算机\Lenovo TAB M10 FHD Rel\Internal shared storage\cnlaunch\X431Pro5\assets 目录下，找到文件名为 StdCfg.ini 的文件。

Go to the computer\Lenovo TAB M10 FHD Rel\Internal shared storage\cnlaunch\X431Pro5\assets directory, and find the file named StdCfg.ini.





用文本编辑器打开并编辑 StdCfg.ini，找到 OnlineFlash 和 Flash 两个字段，默认值为 0，表示诊断软件不支持在线编程，点击相应字段，将值改为 1，然后保存。保存成功后，相应值将变为 1，如下图圈示，表示诊断软件已可支持在线编程功能。

Open and edit StdCfg.ini with a text editor, find the two fields OnlineFlash and Flash, the default value is 0, indicating that the diagnostic software does not support online programming, click the corresponding field, change the value to 1, and save. After the save is successful, the corresponding value will change to 1, as circled in the figure below, indicating that the diagnostic software can support the online programming function.



Note: Except Spain and Portugal are not supported, other regions can be set according to the above method. The overseas online programming menu will not be displayed on the home page, and you need to enter the corresponding diagnostic software to have the corresponding menu.